

NEMA 4X Cabinets - Stainless - Free Standing - Double Doors

NEMACO™

Excellent Electrical Enclosures



Heavy Duty - NEMA 4X - 304 & 316 - Stainless Steel Cabinets

- Exceptional - Quality - Stainless Enclosures - All Weather Outdoor Usage.
- NEMA 4X "PCE" Enclosures designed for the toughest Chemical Plants & Oil Rigs.
- Heavy Duty - Door Seals - Super "Rain Guard" Protection - Strong Door Construction
- NEMA 4X Environmental Seals - Dust, Water Washdown, Snow and Rain Resistance.

NEMA 4X - Excellent Craftsmanship - Cabinet Materials

- 3 PT Latches - Pad Locking Handle - Rolling Wheels - Easy to Use Everyday
- 304 & 316 Stainless Steel Enclosures - Continuous & Smooth Welded Seams
- Interior Panels: White Powdercoated Steel, Aluminum & Stainless Steel.
- Air Conditioned Thermal Cooling Solutions Available (1,000 to 10,000 BTU)
- Adjustable 19" Rack Rackmount Solutions & Lexan Window Kits Available
- Custom Enclosures in Stainless Steel & Aluminum - Super Fast Custom Solutions

Free Standing Stainless NEMA 4X Cabinet

Call Nemaco for Pricing & Availability	<h2>Quality Enclosure Solutions</h2>
NemacoTech.com	

• KEY FEATURES • EXCELLENT QUALITY •



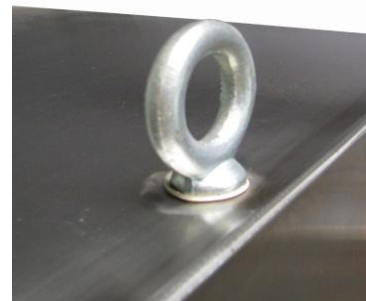
Easy to Open 3 PT Latch Roller Wheels



Rugged Handles - Security Padlock Provision



NEMA 4X - Super Rain Guard Protection



Heavy Duty - Removable Lifting Pad-Eye

NEMA 4X Cabinets - Stainless - Free Standing - Double Doors

NEMACO™

Excellent Electrical Enclosures

Call Nemaco for Pricing & Availability	Quality Enclosure Solutions
NemacoTech.com	

Enclosure Part Number	Enclosure Size H x W x D	Mtl SS Type	Interior Panel - Options				Mtl Thk	Estimated Enclosure Wt (Lbs)
			Aluminum (non coated)	White Powder Coated Steel	304 Stainless (2B Finish)	Panel Size D x E		
N4X484812-FM2DR	48 x 48 x 12	304	N4-P4848A	N4-P4848PC	N4-P4848SS4	45 X 45	12 ga	230.6
N4X484816-FM2DR	48 x 48 x 16	304						255.9
N4X484824-FM2DR	48 x 48 x 24	304						306.6
N4X484836-FM2DR	48 x 48 x 36	304						382.7
N4X544812-FM2DR	54 x 48 x 12	304	N4-P5448A	N4-P5448PC	N4-P5448SS4	51 X 45	12 ga	254.4
N4X544816-FM2DR	54 x 48 x 16	304						281.3
N4X544824-FM2DR	54 x 48 x 24	304						335.1
N4X544836-FM2DR	54 x 48 x 36	304						415.9
N4X545412-FM2DR	54 x 54 x 12	304	N4-P5454A	N4-P5454PC	N4-P5454SS4	51 X 51	12 ga	280.5
N4X545416-FM2DR	54 x 54 x 16	304						309.0
N4X545424-FM2DR	54 x 54 x 24	304						366.0
N4X545436-FM2DR	54 x 54 x 36	304						451.6
N4X604812-FM2DR	60 x 48 x 12	304	N4-P6048A	N4-P6048PC	N4-P6048SS4	57 X 45	12 ga	278.1
N4X604816-FM2DR	60 x 48 x 16	304						306.6
N4X604824-FM2DR	60 x 48 x 24	304						363.7
N4X604836-FM2DR	60 x 48 x 36	304						449.2
N4X605412-FM2DR	60 x 54 x 12	304	N4-P6054A	N4-P6054PC	N4-P6054SS4	57 X 51	12 ga	306.6
N4X605416-FM2DR	60 x 54 x 16	304						336.7
N4X605424-FM2DR	60 x 54 x 24	304						396.9
N4X605436-FM2DR	60 x 54 x 36	304						487.2
N4X606012-FM2DR	60 x 60 x 12	304	N4-P6060A	N4-P6060PC	N4-P6060SS4	57 X 57	12 ga	335.1
N4X606016-FM2DR	60 x 60 x 16	304						366.8
N4X606024-FM2DR	60 x 60 x 24	304						430.2
N4X606036-FM2DR	60 x 60 x 36	304						525.2
N4X725412-FM2DR	72 x 54 x 12	304	N4-P7254A	N4-P7254PC	N4-P7254SS4	69 X 51	12 ga	358.9
N4X725416-FM2DR	72 x 54 x 16	304						392.2
N4X725424-FM2DR	72 x 54 x 24	304						458.7
N4X725436-FM2DR	72 x 54 x 36	304						558.5
N4X726012-FM2DR	72 x 60 x 12	304	N4-P7260A	N4-P7260PC	N4-P7260SS4	69 X 57	12 ga	392.2
N4X726016-FM2DR	72 x 60 x 16	304						427.0
N4X726024-FM2DR	72 x 60 x 24	304						496.7
N4X726036-FM2DR	72 x 60 x 36	304						601.3

• For 316 Stainless Steel (option), add "-316" to the part #, for ex., PCE-N4X-241608-316

NEMA 4X Cabinets - Stainless - Free Standing - Double Doors

NEMACO™

Excellent Electrical Enclosures

Call Nemaco for Pricing & Availability	Quality Enclosure Solutions
NemacoTech.com	

Enclosure Part Number	Enclosure Size H x W x D	Mtl SS Type	Interior Panel - Options				Mtl Thk	Estimated Enclosure Wt (Lbs)
			Aluminum (non coated)	White Powder Coated Steel	304 Stainless (2B Finish)	Panel Size D x E		
N4X727212-FM2DR	72 x 72 x 12	304	N4-P7272A	N4-P7272PC	N4-P7272SS4	69 X 69	12 ga	458.7
N4X727216-FM2DR	72 x 72 x 16	304						496.7
N4X727224-FM2DR	72 x 72 x 24	304						572.7
N4X727236-FM2DR	72 x 72 x 36	304						686.8
N4X847212-FM2DR	84 x 72 x 12	304	N4-P8472A	N4-P8472PC	N4-P8472SS4	81 X 69	12 ga	525.2
N4X847216-FM2DR	84 x 72 x 16	304						566.4
N4X847224-FM2DR	84 x 72 x 24	304						648.8
N4X847236-FM2DR	84 x 72 x 36	304						772.3

• For 316 Stainless Steel (option), add "-316" to the part #, for ex., PCE-N4X-484812-316



NEMA 4X Enclosure with Window Kit

Factory Installed - Window Kits - Available for Select Sizes			
Part No.	Size (H x W)	Material*	Min. Enclosure Size
LW0606	6"x6"	Lexan	24" x 18"
LW0808	8"x8"	Lexan	24" x 18"
LW1005	10"x5"	Lexan	24" x 18"
LW1307	13"x7"	Lexan	24" x 18"
LW1313	13"x13"	Lexan	24" x 24"
LW1515	15"x15"	Lexan	26" x 26"
LW1919	19"x19"	Lexan	30" x 30"
LW2020	20"x20"	Lexan	36" x 36"
LW2525	25"x25"	Lexan	36" x 36"
LW3725	37"x25"	Lexan	48" x 36"

Removable Windows have stainless steel frames.
 Call Nemaco for Custom Size Windows & Glass Materials
 Note: * Other polycarbonate materials may be substituted.

Stainless Steel Gland Cover Plates

- Standard Sizes with NEMA 4X Gaskets
- Custom Shapes & Sizes Available
- Custom Hole Patterns for Connectors

Stainless Steel Pipe Hubs & Fittings

- NPT / FPT Standard Sizes
- FF / RF Pipe Fittings
- Custom Stainless Pipe Welding

NEMA 4X Cabinets - Stainless - Free Standing - Double Doors

NEMACO™

Excellent Electrical Enclosures

Quality - NEMA 4X - Stainless Steel Enclosures

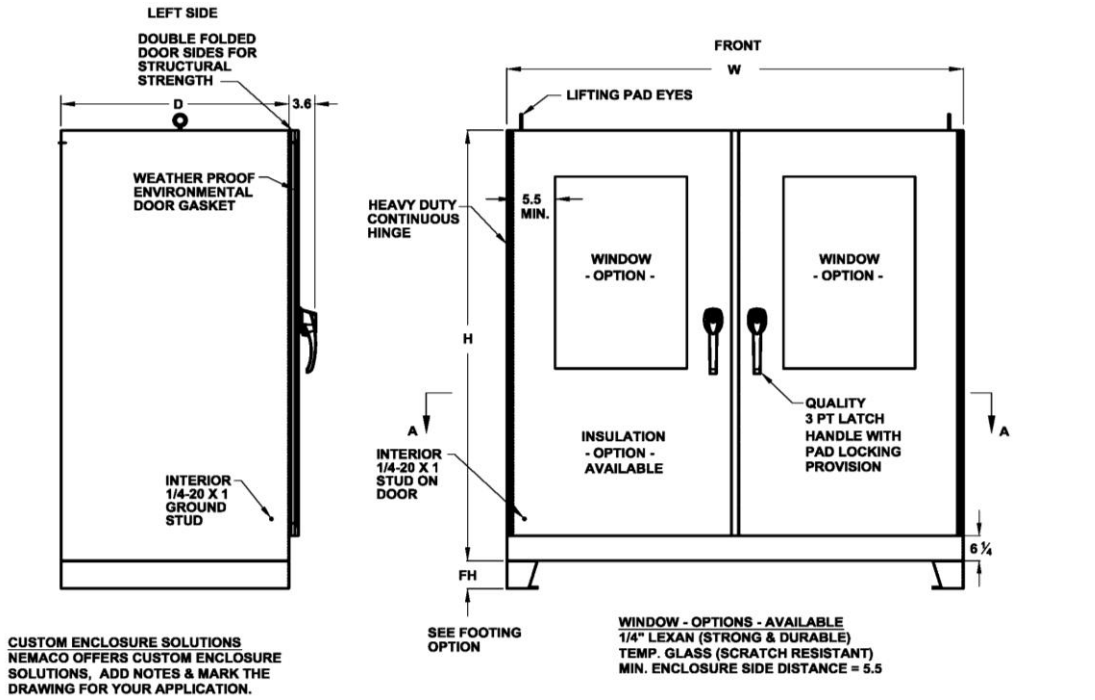


FIG. 1 - NEMA 4X - "PCE" STAINLESS STEEL ENCLOSURE - EXTERIOR DIMENSIONS

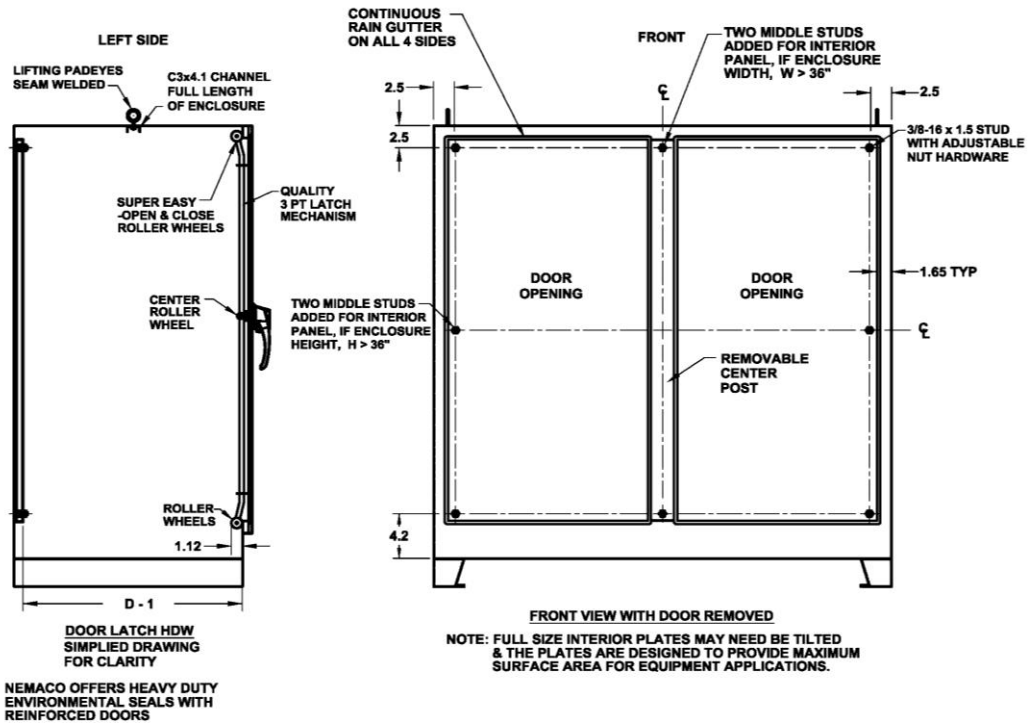


FIG. 2 - NEMA 4X - "PCE" STAINLESS STEEL ENCLOSURE - INTERIOR DIMENSIONS & HARDWARE

NEMA 4X Cabinets - Stainless - Free Standing - Double Doors

NEMACO™

Excellent Electrical Enclosures

Quality - NEMA 4X - Stainless Steel Enclosures

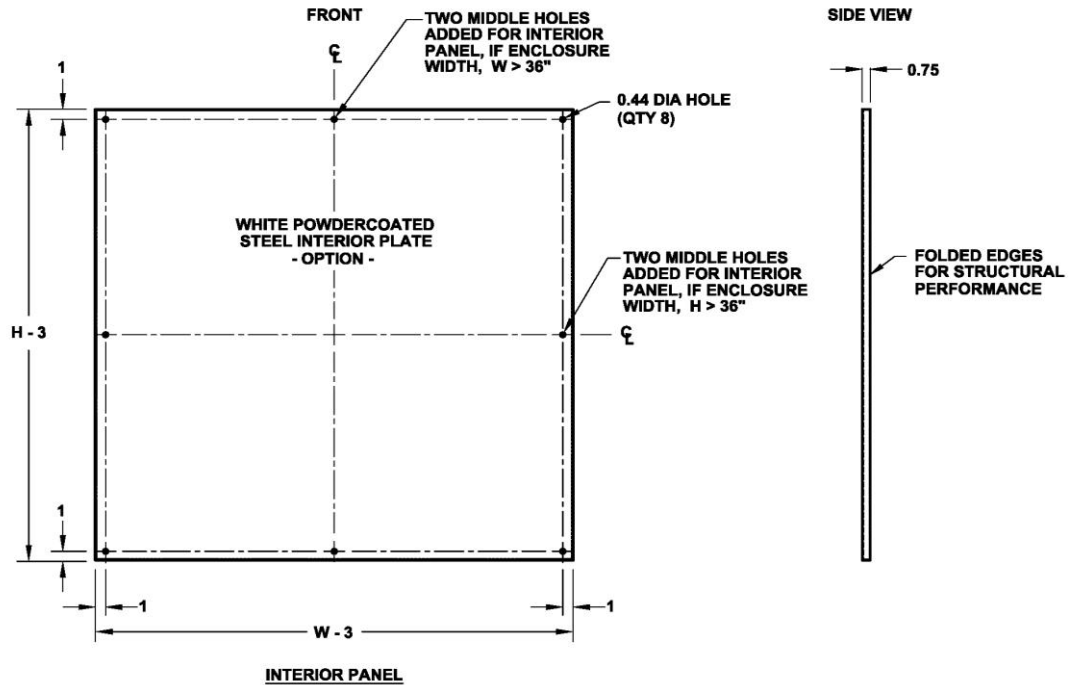


FIG. 3 - INTERIOR PANEL - WHITE POWDERCOATED STEEL

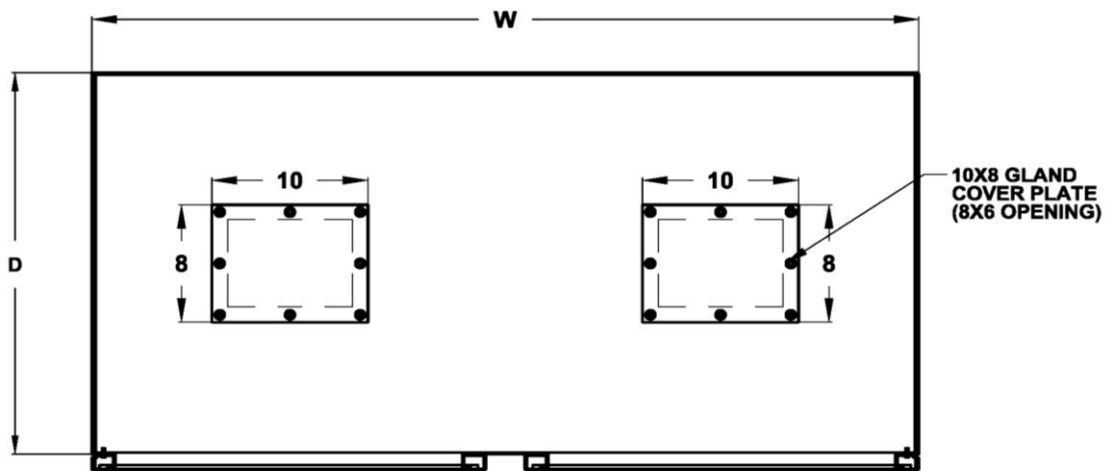


FIGURE 4 SECTION VIEW A-A COVER PLATE OPTIONS

REMOVABLE - GLAND PLATE COVERS - OPTION			
PART#	COVER SIZE	CUT-OUT DIMENSIONS	DESCRIPTION
FP1008-PC	10"X8"	8"X6"	COVER PLATE - POWDERCOATED STEEL (12 GA)
FP1008-PCA	10"X8"	8"X6"	COVER PLATE - POWDERCOATED ALUMINUM (1/8")
FP1008-304SS	10"X8"	8"X6"	COVER PLATE - 304 STAINLESS STEEL (12 GA)
FP1008-316SS	10"X8"	8"X6"	COVER PLATE - 316 STAINLESS STEEL (12 GA)

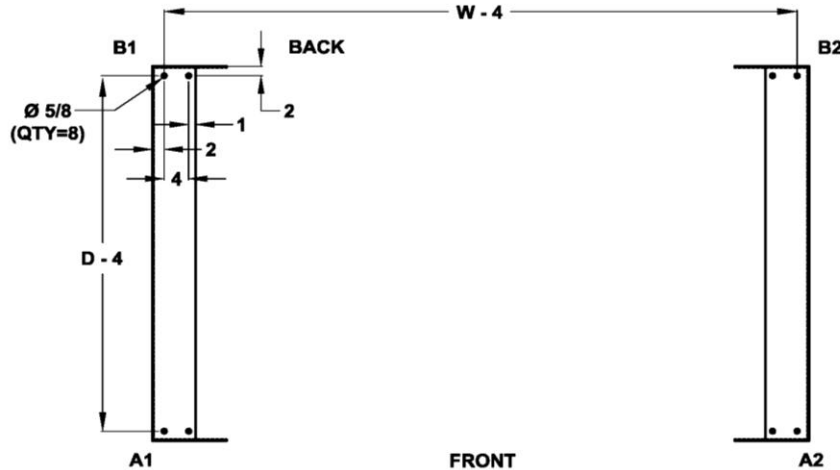
NEMA 4X Cabinets - Stainless - Free Standing - Double Doors

NEMACO™

Excellent Electrical Enclosures

FLOORMOUNT FOOTING HEIGHT

FH-06 = 6" HEIGHT
 FH-12 = 12" HEIGHT
 FH-18 = 18" HEIGHT
 FH-24 = 24" HEIGHT



FRONT

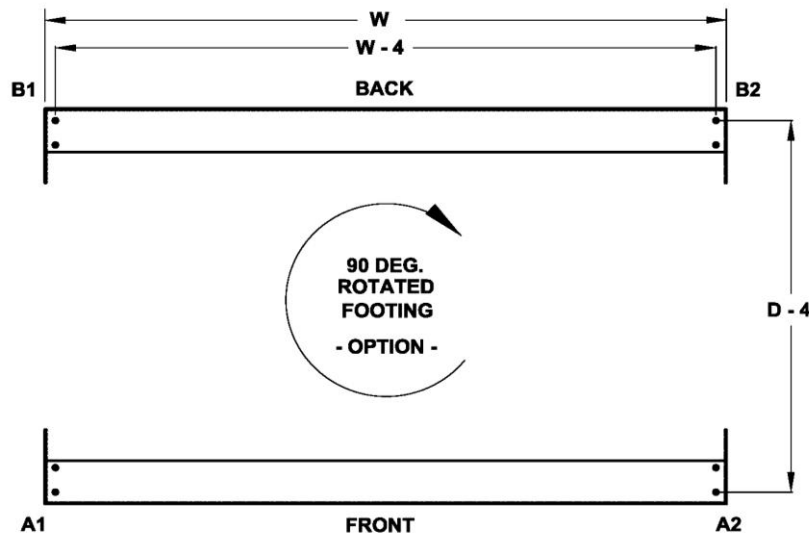
SECTION VIEW B - B

STANDARD FLOOR MOUNT FOOTING

FLOOR MOUNT HOLE DIMENSIONS
 BOLT TO CONCRETE PAD OR TO
 STEEL STRUCTURE

CUSTOM FOOTING DESIGN

NEMACO CAN CHANGE THE FLOOR
 MOUNT DESIGN ON REQUEST.
 SPECIFY THE REQUESTED
 CHANGES ON THIS DRAWING



90 DEG.
 ROTATED
 FOOTING

- OPTION -

FRONT

90 DEG ROTATED FOOTING - OPTION

THIS 90 DEGREE ROTATED FLOOR MOUNT
 FOOTING BASE MAY BE WIDENED IN ORDER
 TO PROVIDE EXTRA STABILITY & SUPPORT
 FOR HEAVY EQUIPMENT

FIGURE 5 FLOORMOUNT FOOTING - OPTIONS AVAILABLE

NEMA 4X Cabinets - Stainless - Free Standing - Double Doors

NEMACOTM

Excellent Electrical Enclosures

Air Conditioned - NEMA 4/4X - 19" Rack Server - Enclosures & Thermal Analysis Solutions

- Call US about assisting you with Thermal Analysis for proper sizing of Air Conditioners for Cooling.
- We offer "Smart" Air Conditioners with Remote Control Access & SCADA Ethernet Communications.
- 1,000 BTU to 20,000 BTU Air Conditioners are available with integrated heating options.

Wire Ways & Cable Trays for Electrical Wiring and Fiber Optic Cables

- Call US about assisting you with Copper Electrical Wiring / Fiber Optic Cables - Wire Ways
- We offer "Custom" Aluminum, Stainless Steel and Powder Coated Wire Ways.

Stainless Steel - Rackmount - Server / SCADA - Enclosure & Cabinets - Solutions

- Call US about assisting you with - Custom - Stainless Steel - 19" Rackmount Enclosures & Cabinets
- We offer Aluminum, Stainless & Powder Coated Steel 19" Rack Rails for SCADA & Server Equipment
- Ask Us about 4 Door - Stainless Steel Cabinets with 2 Bays for Server Rack Equipment