

NEMA 4X Enclosures - Stainless - Wall Mount - JIC Hardware

NEMACO™

Excellent Electrical Enclosures



NEMA 4X - 304 & 316 - Stainless Steel Enclosure Applications

The NEMA 4X type of enclosure provides excellent water resistance to rain and corrosion resistance to most wash-down applications. This style of NEMA 4X enclosure with JIC latches permits the cover to be removed completely for repair & maintenance. This stainless enclosure (junction box) can be used both indoors & outdoors for electrical wiring and electronics. The NEMA 4X (304 & 316) stainless steel enclosures are used in chemical plants, crude oil pump stations, off-shore platforms and telecommunications.

NEMA 4X - Stainless Steel Enclosure Materials & Finish

- Nemaco offers the NEMA 4X enclosures in 304 stainless steel. 316 SS option available.
- Stainless Steel JIC spring latches for the box cover for Easy Access & Electrical Repairs.
- NEMA 4X Environmental Seal for dust, water, snow and rain resistance.
- Wall Brackets are provided for easy enclosure mounting to walls or metal structure.
- Interior Panels options available : aluminum, epoxy coated steel & stainless steel.
- NEMA 4X Standard & Custom sizes. Super Fast Customization Services are Available.

Enclosure Pricing & Availability
Call Nemaco or send an email.

Note: 304 Stainless Steel is the standard NEMA 4X enclosure material.
For 316SS option, add "-316" to the part number, for ex. N4X-161206-316

Enclosure Part Number	Enclosure Size H x W x D	Mtl SS Type	Interior Panel				Door Latch Qty	Estimated Enclosure Wt (Lbs)
			Aluminum 5052	Steel with Epoxy Coating	304 SS Orbital Finish	Panel Size D x E		
N4X-161206-304	16 x 12 x 6	304	N4-P1612A	N4-P1612EP	N4-P1612SS4	13 X 9	4	26.3
N4X-161208-304	16 x 12 x 8	304						30.0
N4X-161210-304	16 x 12 x 10	304						33.7
N4X-161212-304	16 x 12 x 12	304						37.3
N4X-161606-304	16 x 16 x 6	304	N4-P1616A	N4-P1616EP	N4-P1616SS4	13 X 13	4	32.1
N4X-161608-304	16 x 16 x 8	304						36.3
N4X-161610-304	16 x 16 x 10	304						40.5
N4X-161612-304	16 x 16 x 12	304						44.7
N4X-201606-304	20 x 16 x 6	304	N4-P2016A	N4-P2016EP	N4-P2016SS4	17 X 13	4	37.9
N4X-201608-304	20 x 16 x 8	304						42.6
N4X-201610-304	20 x 16 x 10	304						47.4
N4X-201612-304	20 x 16 x 12	304						52.1
N4X-202006-304	20 x 20 x 6	304	N4-P2020A	N4-P2020EP	N4-P2020SS4	17 X 17	4	44.7
N4X-202008-304	20 x 20 x 8	304						50.0
N4X-202010-304	20 x 20 x 10	304						55.3
N4X-202012-304	20 x 20 x 12	304						60.6
N4X-241606-304	24 x 16 x 6	304	N4-P2416A	N4-P2416EP	N4-P2416SS4	21 X 13	4	43.7
N4X-241608-304	24 x 16 x 8	304						49.0
N4X-241610-304	24 x 16 x 10	304						54.2
N4X-241612-304	24 x 16 x 12	304						59.5

Nemaco Technology, LLC. "Nemaco" is a trademark of Nemaco Technology, LLC. All Rights Reserved.

Specifications are subject to change without notice. Rev. 3-30-2012

NEMA 4X Enclosures - Stainless - Wall Mount - JIC Hardware

NEMACO™

Excellent Electrical Enclosures

Medium Size Enclosures & Cabinets

Enclosure Pricing & Availability

Call Nemaco or send an email.

Note: 304 Stainless Steel is the standard NEMA 4X enclosure material.

For 316SS option, add "-316" to the part number, for ex. N4X-161206-316

Enclosure Part Number	Enclosure Size A x B x C	Mtl SS Type	Interior Panel				Door Latch Qty	Estimated Enclosure Wt (Lbs)
			Aluminum 5052	Steel with Epoxy Coating	304 SS Orbital Finish	Panel Size D x E		
N4X-241806-304	24 x 18 x 6	304	N4-P2018A	N4-P2018EP	N4-P2018SS4	21 X 15	4	47.6
N4X-241808-304	24 x 18 x 8	304						53.2
N4X-241810-304	24 x 18 x 10	304						58.7
N4X-241812-304	24 x 18 x 12	304						64.3
N4X-242006-304	24 x 20 x 6	304	N4-P2420A	N4-P2420EP	N4-P2420SS4	21 X 17	5	51.6
N4X-242008-304	24 x 20 x 8	304						57.4
N4X-242010-304	24 x 20 x 10	304						63.2
N4X-242012-304	24 x 20 x 12	304						69.0
N4X-242406-304	24 x 24 x 6	304	N4-P2424A	N4-P2424EP	N4-P2424SS4	21 X 21	5	59.5
N4X-242408-304	24 x 24 x 8	304						65.9
N4X-242410-304	24 x 24 x 10	304						72.2
N4X-242412-304	24 x 24 x 12	304						78.5
N4X-302006-304	30 x 20 x 6	304	N4-P3020A	N4-P3020EP	N4-P3020SS4	27 X 17	7	61.9
N4X302008-304	30 x 20 x 8	304						68.5
N4X-302010-304	30 x 20 x 10	304						75.1
N4X-302012-304	30 x 20 x 12	304						81.7
N4X-302406-304	30 x 24 x 6	304	N4-P3024A	N4-P3024EP	N4-P3024SS4	27 X 21	7	71.4
N4X-302408-304	30 x 24 x 8	304						78.5
N4X-302410-304	30 x 24 x 10	304						85.7
N4X-302412-304	30 x 24 x 12	304						92.8
N4X-303006-304	30 x 30 x 8	304	N4-P3030A	N4-P3030EP	N4-P3030SS4	27 X 27	7	93.6
N4X-303008-304	30 x 30 x 10	304						101.5
N4X-303010-304	30 x 30 x 12	304						109.4
N4X-303012-304	30 x 30 x 16	304						125.3
N4X-362406-304	36 x 24 x 8	304	N4-P3624A	N4-P3624EP	N4-P3624SS4	33 X 21	7	91.2
N4X-362408-304	36 x 24 x 10	304						99.1
N4X-362410-304	36 x 24 x 12	304						107.0
N4X-362412-304	36 x 24 x 16	304						122.9
N4X-363006-304	36 x 30 x 8	304	N4-P3630A	N4-P3630EP	N4-P3630SS4	33 X 27	7	108.6
N4X-363008-304	36 x 30 x 10	304						117.3
N4X-363010-304	36 x 30 x 12	304						126.1
N4X-363012-304	36 x 30 x 16	304						143.5
N4X-363606-304	36 x 36 x 8	304	N4-P3636A	N4-P3636EP	N4-P3636SS4	33 X 33	7	126.1
N4X-363608-304	36 x 36 x 10	304						135.6
N4X-363610-304	36 x 36 x 12	304						145.1
N4X-363612-304	36 x 36 x 16	304						164.1

NEMA 4X Enclosures - Stainless - Wall Mount - JIC Hardware

NEMACO™

Excellent Electrical Enclosures

Large Size Enclosures & Cabinets

Enclosure Pricing & Availability
Call Nemaco or send an email.

Note: 304 Stainless Steel is the standard NEMA 4X enclosure material.
For 316SS option, add "-316" to the part number, for ex. N4X-161206-316

Enclosure Part Number	Enclosure Size A x B x C	Mtl SS Type	Interior Panel				Door Latch Qty	Estimated Enclosure Wt (Lbs)
			Aluminum 5052	Steel with Epoxy Coating	304 SS Orbital Finish	Panel Size D x E		
N4X-363008-304	36 x 30 x 8	304	N4-P3630A	N4-P3630EP	N4-P3630SS4	33 X 27	7	108.6
N4X-363010-304	36 x 30 x 10	304						117.3
N4X-363012-304	36 x 30 x 12	304						126.1
N4X-363016-304	36 x 30 x 16	304						143.5
N4X-363608-304	36 x 36 x 8	304	N4-P3636A	N4-P3636EP	N4-P3636SS4	33 X 33	7	126.1
N4X-363610-304	36 x 36 x 10	304						135.6
N4X-363612-304	36 x 36 x 12	304						145.1
N4X-363616-304	36 x 36 x 16	304						164.1
N4X-423608-304	42 x 36 x 8	304	N4-P4236A	N4-P4236EP	N4-P4236SS4	39 X 33	8	143.5
N4X-423610-304	42 x 36 x 10	304						153.8
N4X-423612-304	42 x 36 x 12	304						164.1
N4X-423616-304	42 x 36 x 16	304						184.7
N4X-483608-304	48 x 36 x 8	304	N4-P4836A	N4-P4836EP	N4-P4836SS4	45 X 33	8	160.9
N4X-483610-304	48 x 36 x 10	304						172.0
N4X-483612-304	48 x 36 x 12	304						183.1
N4X-483616-304	48 x 36 x 16	304						205.3
N4X-603610-304	60 x 36 x 10	304	N4-P6036A	N4-P6036EP	N4-P16036SS4	57 X 33	9	208.4
N4X-603612-304	60 x 36 x 12	304						221.1
N4X-603616-304	60 x 36 x 16	304						246.4
N4X-603624-304	60 x 36 x 24	304						297.1



Window Option is Available

Just add "W" to part number for Window Option

For example, N4X-362412-304-W

That is easy

NEMA 4X Enclosure with Lexan Window Option

NEMA 4X Enclosures - Stainless - Wall Mount - JIC Hardware

NEMACO™

Excellent Electrical Enclosures

NEMA 4X - Stainless Steel Enclosure - Drawing

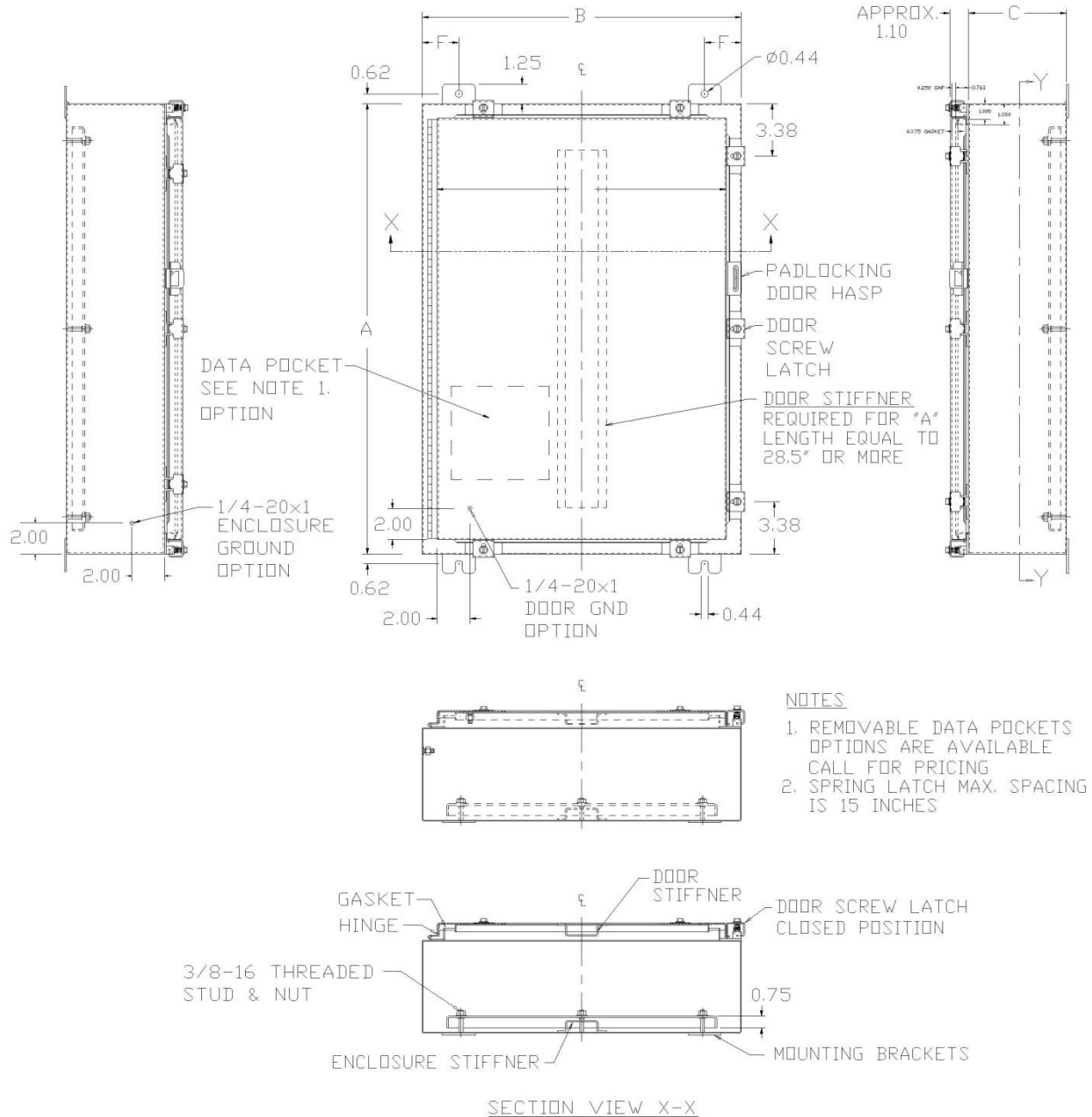


FIG. 1 - ENCLOSURE DIMENSIONED OUTLINE DRAWINGS

NEMA 4X Enclosures - Stainless - Wall Mount - JIC Hardware

NEMACO™

Excellent Electrical Enclosures

NEMA 4X - Stainless Steel Enclosure - Drawing

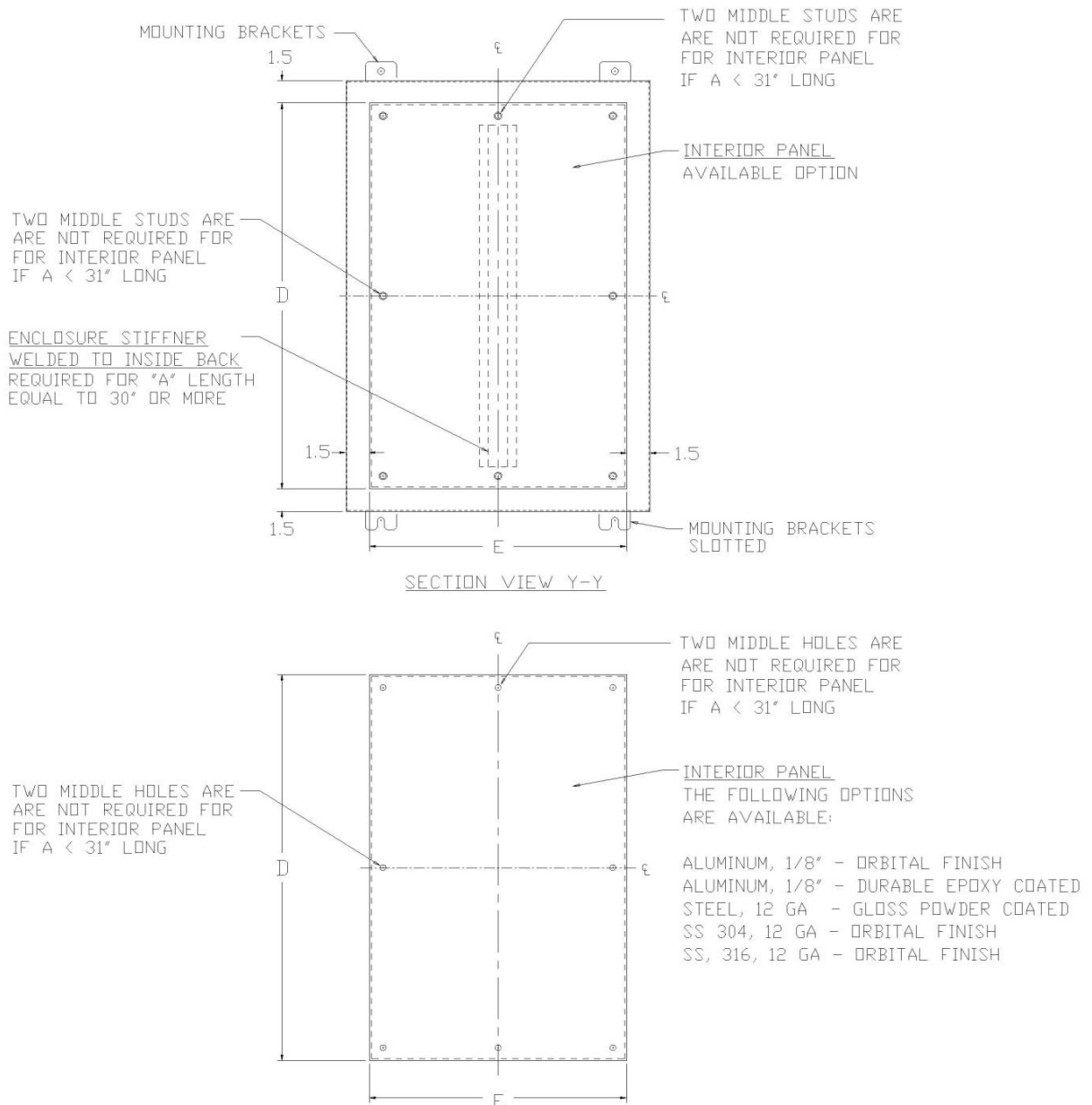


FIG. 1 - DOOR OPENING & INTERIOR COVER PLATE