

NEMA 4X Enclosures - Stainless - Junction Boxes - JIC Cover

NEMACO™

Excellent Electrical Enclosures



NEMA 4X - 304 & 316 - Stainless Steel - Enclosure & Junction Boxes

The NEMA 4X type of enclosure (junction box) provides excellent water resistance to rain and corrosion resistance to most wash-down applications. This style of NEMA 4X enclosure with JIC latches permits the cover to be removed completely for repair & maintenance. This stainless enclosure (junction box) can be used both indoors & outdoors for electrical wiring and electronics. The NEMA 4X (304 & 316) stainless steel enclosures are used in chemical plants, crude oil pump stations, off-shore platforms and telecommunications equipment.

NEMA 4X - Stainless Steel Enclosure - Materials & Finish

- Nemaco offers the NEMA 4x enclosure in 304 stainless steel. 316 SS option available.
- Stainless Steel JIC Screw latches for the box cover for Easy Access & Electrical Repairs.
- Environmental Seal for water resistance. Other types of seals can be provided as option.
- External Enclosure Brackets for easy wall mounting the box to walls or equipment racks.
- Enclosure Sub-panels (option) available in powder coated carbon steel & aluminum.
- Custom sizes, materials and modifications are available.

Nemaco Tel. 281-251-4233

NemacoTech.com

Note: 304 Stainless Steel is the standard enclosure (junction box) material.

Option for 316 SS, Add "-316" to the part number, for ex. N4X-040403-316

Enclosure Part Number	Enclosure Size A x B x C	Mtl Base & Cover	Exterior Mounting A1 x B1	Overall Size A2 x B2	Clearance Gaps & Dimensions					Sub-Panel Mtg Plate	
					C1	C2	G	L1	L2	P/N	Size S1 x S2
N4X040403	4 x 4 x 3	16/16	4.75 x 2.00	5.50 x 5.38	2.56	N/A	N/A	1.38	1.38	N/A	N/A x N/A
N4X060403	6 x 4 x 3	16/16	6.75 x 2.00	7.50 x 5.38	2.56	N/A	0.31	1.38	2.38	6PL4	4.88 x 3.38
N4X060604	6 x 6 x 4	16/16	6.75 x 4.00	7.50 x 7.38	3.56	3.5	0.31	2.38	2.38	6PL6	4.88 x 4.88
N4X080604	8 x 6 x 4	16/16	8.75 x 4.00	9.50 x 7.38	3.56	3.5	0.25	3.38	2.38	8PL6	6.88 x 4.88
N4X080804	8 x 8 x 4	16/16	8.75 x 6.00	9.50 x 9.38	3.56	3.5	0.25	3.38	3.38	8PL8	6.88 x 6.88
N4X100804	10 x 8 x 4	16/16	10.75 x 6.00	11.50 x 9.38	3.56	3.5	0.25	3.38	1.50	10PL8	8.88 x 6.88
N4X101004	10 x 10 x 4	16/16	10.75 x 8.00	11.50 x 11.38	3.56	3.5	0.25	3.38	2.50	10PL10	8.88 x 8.88
N4X121005	12 x 10 x 5	16/16	12.75 x 8.00	13.50 x 11.38	4.56	4.5	0.25	2.00	3.00	12PL10	10.88 x 8.88
N4X121206	12 x 12 x 6	16/16	12.75 x 10.00	13.50 x 13.38	5.56	5.5	0.25	2.00	2.00	12PL12	10.88 x 10.88
N4X141206	14 x 12 x 6	16/16	14.75 x 10.00	15.50 x 13.38	5.56	5.5	0.25	2.00	3.00	14PL12	12.88 x 10.88
N4X161406	16 x 14 x 6	16/16	16.75 x 12.00	17.50 x 15.38	5.56	5.5	0.25	3.50	1.50	16PL14	14.88 x 12.88
N4X161606	16 x 16 x 6	14/14	16.75 x 14.00	17.50 x 17.38	5.56	5.5	0.25	3.50	3.50	16PL16	14.88 x 14.88
N4X202006	20 x 20 x 6	14/14	20.75 x 18.00	21.50 x 21.38	5.56	5.5	0.25	4.00	4.00	20PL20	18.88 x 18.88
N4X242408	24 x 24 x 8	14/14	24.75 x 22.00	25.50 x 25.38	7.56	7.5	0.25	6.00	6.00	24PL24	22.88 x 22.88
N4X303010	30 x 30 x 10	14/14	30.75 x 28.00	31.50 x 31.38	9.56	9.5	0.25	6.00	6.00	30PL30	28.88 x 28.88
N4X362410	36 x 24 x 10	14/14	36.75 x 22.00	37.50 x 25.38	9.56	9.5	0.25	6.00	6.00	36PL30	34.88 x 22.88
N4X363010	36 x 30 x 10	14/14	36.75 x 28.00	37.50 x 31.38	9.56	9.5	0.25	6.00	6.00	36PL30	34.88 x 28.88
N4X363612	36 x 36 x 12	14/14	36.75 x 34.00	37.50 x 37.38	11.56	11.5	0.25	6.00	6.00	36PL36	34.88 x 34.88

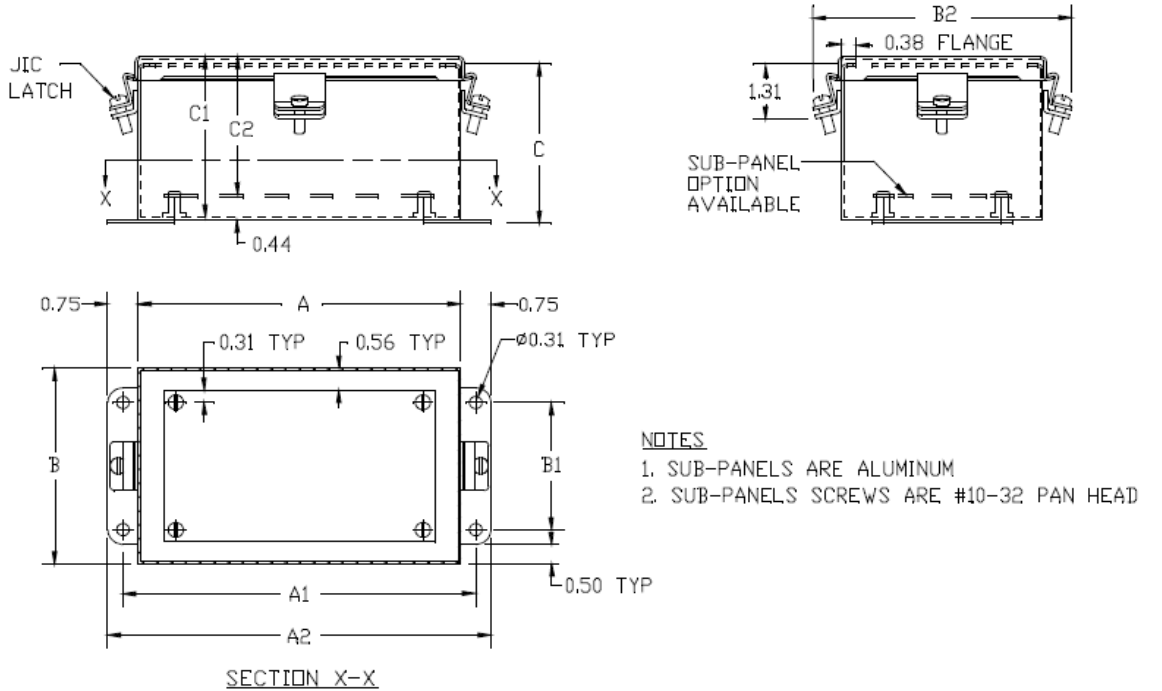
Nemaco Technology, LLC. "Nemaco" is a trademark of Nemaco Technology, LLC. All Rights Reserved.

Specifications are subject to change without notice. Rev. 6-2-2009

NEMA 4X Enclosures - Stainless - Junction Boxes - JIC Cover

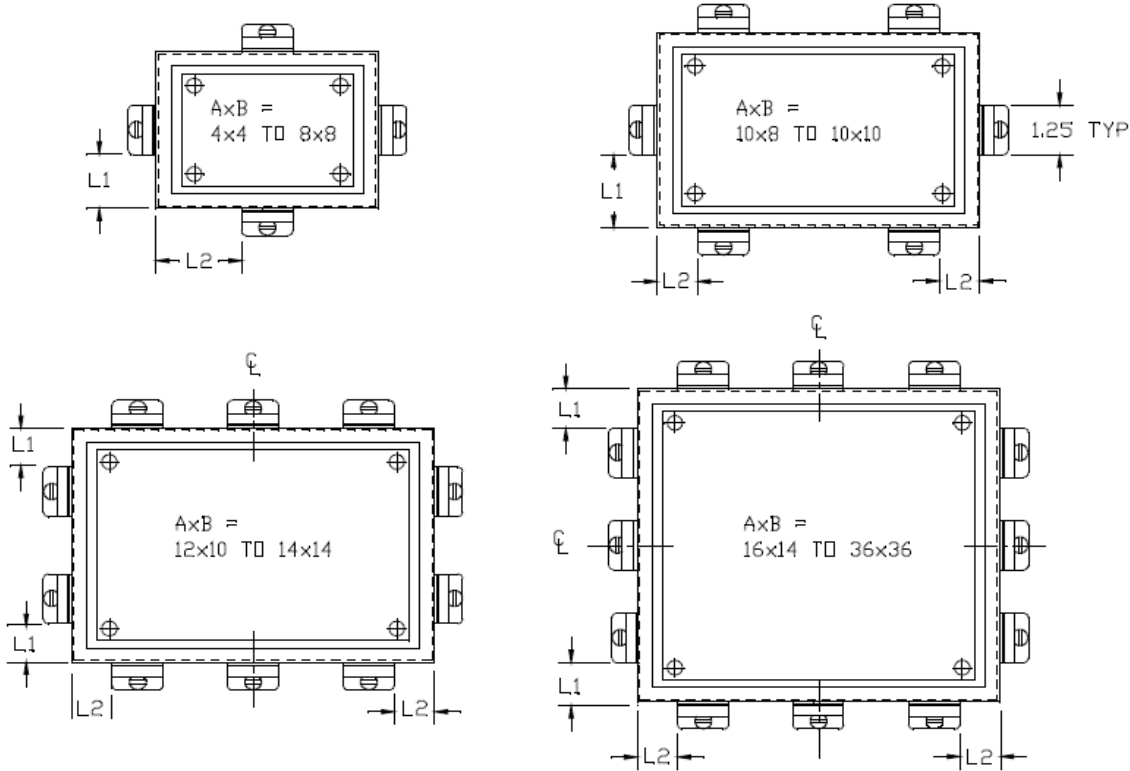
NEMACO™

Excellent Electrical Enclosures



- NOTES**
1. SUB-PANELS ARE ALUMINUM
 2. SUB-PANELS SCREWS ARE #10-32 PAN HEAD

JIC SCREW LATCH LOCATIONS



NEMA 4X - 304 & 316 - Stainless Steel - Enclosure & Junction Boxes

Nemaco Technology, LLC. "Nemaco" is a trademark of Nemaco Technology, LLC. All Rights Reserved.

Specifications are subject to change without notice. Rev. 6-2-2009